

Vocal

If I Were a Rich Man

from "Fiddler on the Roof"

Chaim Topol, Jerry Bock, Sheldon Harnick

♩ = 68



If I were a rich man Ya ba dib-ba dib-ba dib-ba dib-ba dib-ba dum



All day long I'd bid-dy bid-dy bum If I were a wealthy man I



wouldn't have to work hard Ya ba dib-ba dib-ba dib-ba dib-ba dib-ba dum



If I were a bid-dy bid-dy rich Idle - didle-didle-didle man I'd build a



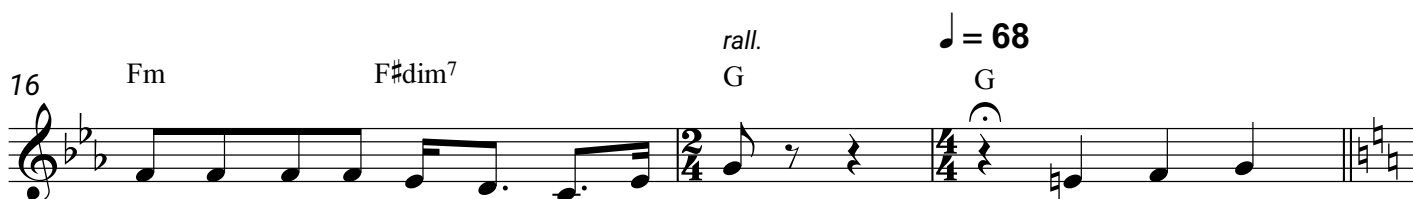
big tall house with rooms by the dozen Right in the middle of the town A



fine tin roof with real wooden floors below There would be



one long stair-case just going up And one even longer coming down And



one more leading nowhere, just for show I'd fill my